

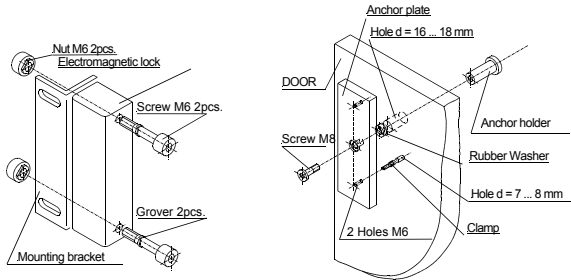
3. Safety instructions

There is no life-threatening tension in the lock. In order to avoid the failure of the lock and the equipment connected to it, it is recommended to perform installation and repair work with the power supply disconnected.

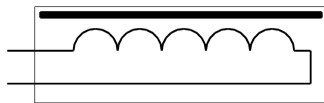
4. Mounting the lock

The lock electromagnet is mounted on the frame of the door with the help of the fixing bracket and the fixing set. The armature plate is mounted opposite the electromagnet on the door. To ensure the most efficient use of the maximum door retention force, it is recommended to install the lock electromagnet at a minimum distance from the door edge.

It is recommended to install the lock on the door together with the door closer.

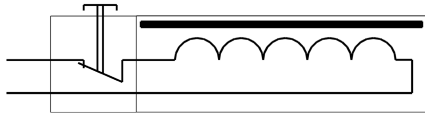


К управляющему устройству



а) Исполнение электромагнита без кнопки аварийного открывания замка.

К управляющему устройству



б) Исполнение электромагнита с кнопкой аварийного открывания замка.

Fig. 3. Electrical schematic diagram