



COLORED VIDEO INTERCOM

User's Manual



Model: CTV-M1700M

CONTENTS

PRODUCT DESCRIPTION.....	3
PRECAUTIONARY MEASURES.....	3
CONSTRUCTION AND CONTROLS OF THE CTV-M1700M MONITOR.....	4
Controls and indication.....	4
Control buttons.....	6
MONITOR INSTALLATION CTV-M1700M.....	7
Connection diagram.....	8
Connecting the delivery set.....	8
Connecting additional devices.....	9
OPERATION.....	11
Visitor call.....	11
Monitoring.....	12
Call forwarding to another monitor.....	13
Internal audio communication (Intercom mode).....	13
Video surveillance (option).....	14
On-Screen Display.....	14
CONTENTS OF DELIVERY.....	17
CTV-M1700M MONITOR SPECIFICATIONS.....	18
STORAGE RULES.....	19
GUARANTEE.....	19

▪ **PRODUCT DESCRIPTION**

The CTV-M1700M video monitor is designed to control access and two-way audio and video communication with the visitor with the connected mate - the calling panel.

- The CTV-M1700M monitor allows the operator to communicate without physical contact with a person who wants to enter the premises, and to restrict or allow access to the premises. This provides a high level of convenience and safety.
- The monitor CTV-M1700M has dimensions of 201x130x22 mm. It is equipped with a color LCD display with a diagonal of 7 "(800x480). You can connect one or two calling panels with a 4-wire connection scheme to the intercom, as well as an additional external camera and an additional monitor (a TV with an LF input).
- The monitor CTV-M1700M is equipped with internal memory (128 MB) with the ability to store more than 100 photos. The photo is automatically saved for each incoming call or manually in the playback mode using the wheel button (turn up). The maximum number of parallel monitors in the common circuit is four. In this case, the "intercom" function is activated between the monitors and it is possible to transfer the call to other devices (similar monitors)

▪ **ATTENTION**

The manufacturer reserves the right to make any changes to the information contained herein.

▪ **PRECAUTIONS**

- Read this manual carefully and keep it in a safe place.
- Please, entrust the work of connecting this product to a qualified specialist.
- Don't use the product outside the temperature and humidity ratings.
- Avoid installing the product near heat sources, such as radiators for heating, etc.
- Don't allow the installation of the product and the laying of communication lines near potential sources of electromagnetic interference, such as a TV, amplifier, radio, etc.
- Don't drop the device or any mechanical stress.
- When connecting the call panel, it is advisable to use a sun visor to prevent moisture from entering and direct sunlight.

- Don't use chemically active or abrasive detergents to clean the product. Use wet flannel rags.
- Eliminate the strong kinks of the connecting wires. This may cause a short circuit and an electric shock.

ATTENTION!



Inside this product are uninsulated contacts with a voltage of 220 volts. They pose a danger to human health and life. Repair and maintenance can only be carried out by a qualified specialist!

▪ **CONSTRUCTION AND CONTROLS OF THE CTV-M1700M MONITOR**

- Controls and display

See the table №1,2.

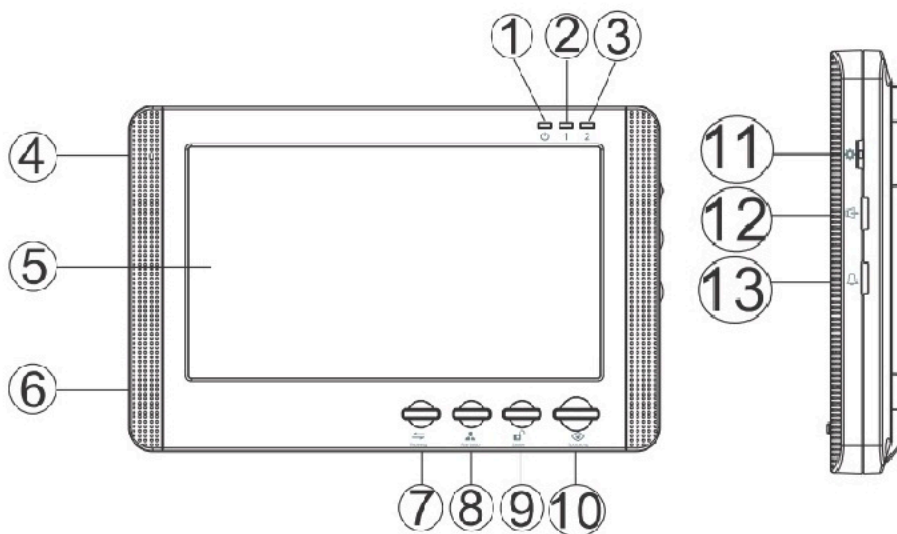









Table №1

№	Name	Description
1	Power indicator	Lights red when power is applied.
2	1st panel indicator	When working with the first panel it glows blue.
3	2nd panel indicator	When working with the second panel glows blue.
4	Microphone	Transfer of voice to the speaker of the calling panel.
5	TFT display	Video signal display of the calling panel.
6	Speaker	Playing sound from the microphone of the call panel.
7	Call forwarding	Call forwarding to another monitor.
8	Monitoring	Watching video in real time with a calling panel.
9	Opening	Opens the electric door lock.
10	Conversation	Turning on the sound transmission with the calling panel.
11	Multi-function button	<ol style="list-style-type: none">1. Adjust the brightness and color of the display in monitoring mode.2. Enter and navigate the on-screen menu in standby mode.3. Capture photos manually in the monitoring mode by turning the wheel up.
12	Volume of sound	Adjust the volume of the sound.
13	Call volume	Adjust the ringer volume.

▪ **Control buttons**

Table №2

Symbol	Explanation
	Transferring a call to another monitor or viewing the video signal of the call panel in standby mode.
	View image from the camera at the entrance in real time.
	Opening of the relay of the calling panel (opening of the electric lock).
	Activation of conversation with the visitor.
	<ol style="list-style-type: none"> 1. In monitoring mode, adjust the brightness, contrast and color of the display. 2. In standby mode - enter and navigate through the on-screen menu. 3. In the monitoring mode - capture photos manually by turning the wheel upwards.
	Adjust the volume of the ringtone.
	Adjusts the speaker volume.

■ CTV-M1700M MONITOR CONNECTION INSTALLATION AND CONNECTION DIAGRAM

■ Mounting the monitor CTV-M1700M

Notes

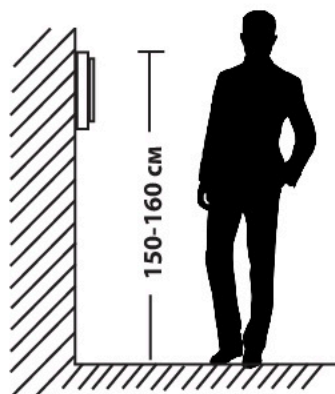
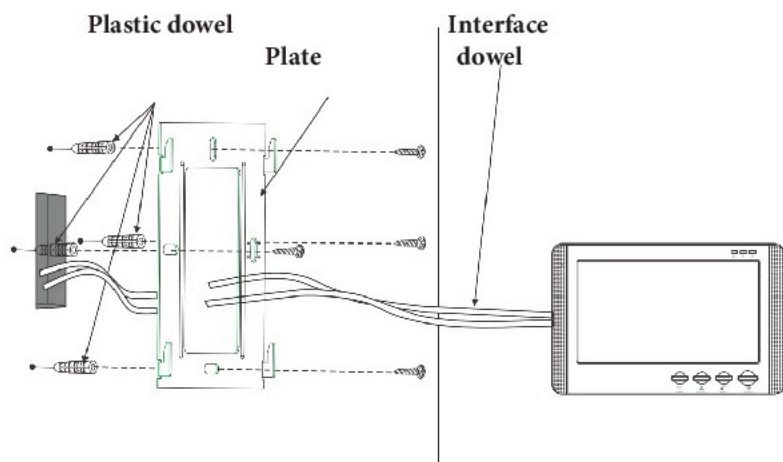
Turn off the power before installation.

Install the monitor at least 30cm away from electrical lines. It is recommended to install the monitor at a height of 150-160 cm from the floor, as shown in the figure below.

Avoid moisture and electromagnetic fields.

Have the installation serviced by qualified personnel.

Protect the equipment from falling and sharp impacts, this can damage it.



▪ Connection diagram

▪ If you only use one call panel (included), then you must connect it to the connector of the CN1 monitor, observing the color matching and the assignment of the connecting wires on the monitor and the panel (Fig. 1). If you intend to use an additional calling panel (not included), connect it to the CN2 connector.

Connector CN1 and CN2 have the same functionality (line 2). Assignment and colors of wires.

- 1.Red: DC12B
2. Blue: Audio
3. Black: "Earth" (GND)
4. Yellow: Video

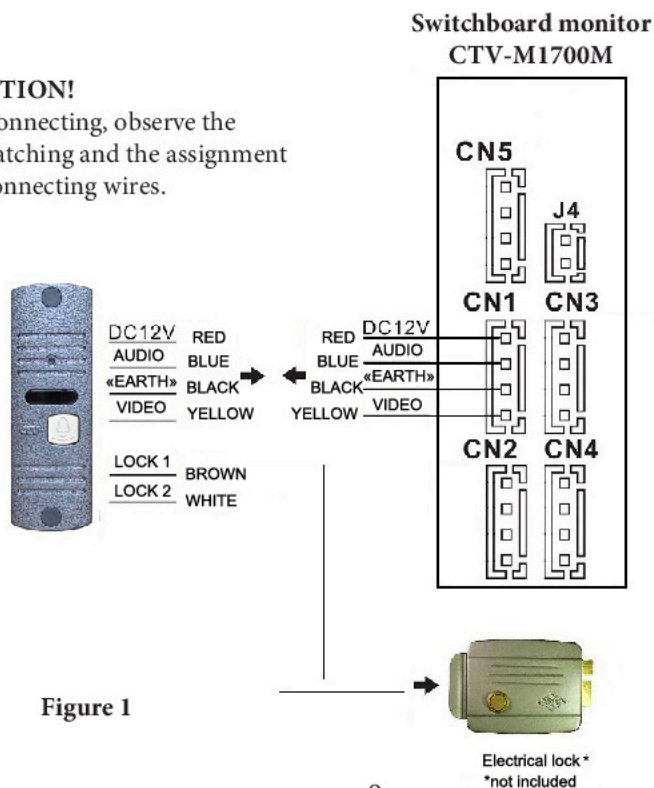
The electric lock is controlled by means of the normally open contacts of the relay (N.O.) of the calling panel (Fig. 1, 2):

- 1.Brown: Lock1
- 2.White: Lock 2

▪ Connecting the delivery set

ATTENTION!

When connecting, observe the color matching and the assignment of the connecting wires.



■ Connecting additional devices

To connect additional monitors (not included) and creating a multi-drop system, you will need up to 3 additional monitors and one additional calling panel. The maximum capacity of the system is -4 monitors and 2 calling panels. When creating a system where more than one monitor is needed, one monitor should be assigned the primary monitor and the rest should be assigned to the monitor. To do this, go to the on-screen menu of the monitor and set the master monitor to Master mode, and to additional - Slave. Additional monitors are connected to the main one using the CN3 (input connector) and CN4 (output connector) connectors. The pin assignments are shown below:

- 1.Red: DC12V
- 2.Blue: Earth (GND)
- 3.Black: Data
- 4.Yellow: Video

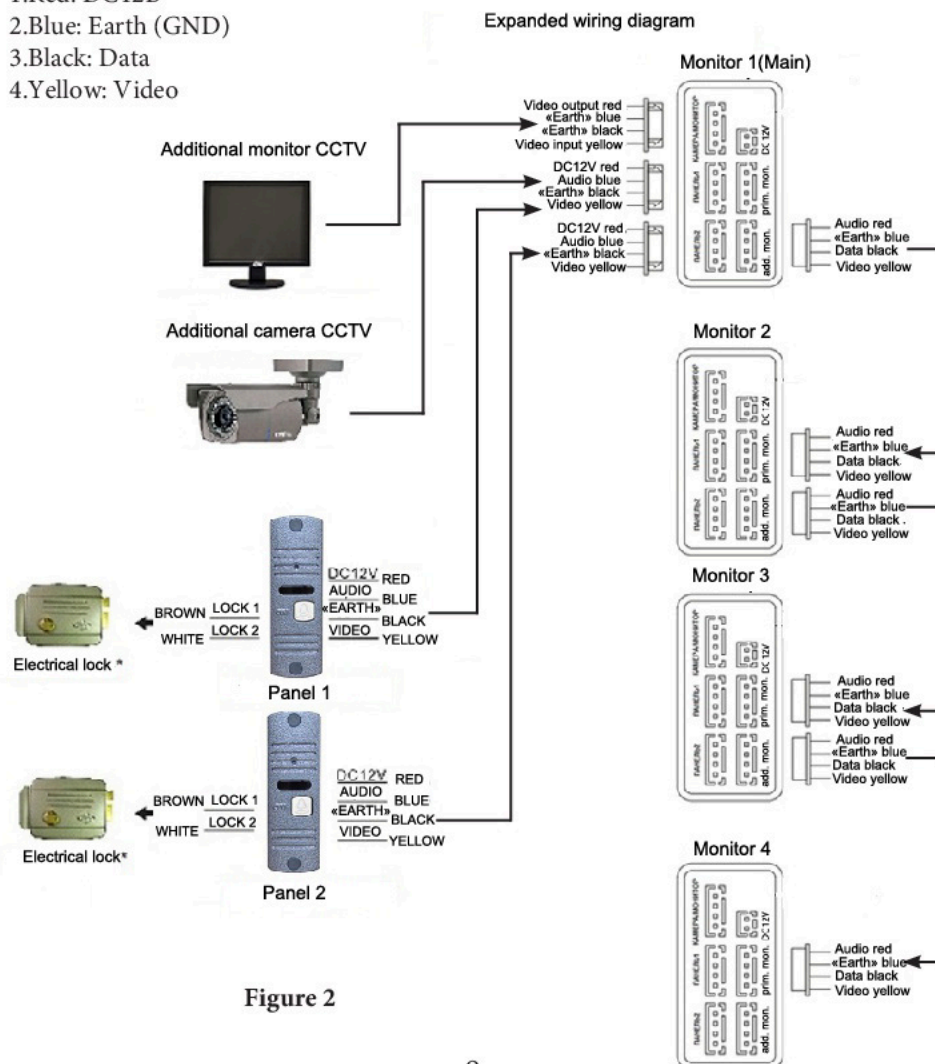


Figure 2

- The calling panels are connected only to the main monitor. In addition to the two calling panels, an additional camera and a video surveillance monitor (available separately) can be connected to the main monitor. These devices should be switched to the corresponding contacts of the CN5 connector (Fig. 2):*

1. Red: Video output
2. Blue: Earth
3. Black: "Earth"
4. Yellow: Video input

- To the connector CN2, instead of the calling panel, you can connect the camcorder (thus, the blue wire of the audio signal is not used). A video camera with a current consumption of no higher than 300 mA can be connected to the CN5 connector.*

- The cameras connected to the CN5 or CN2 connectors can be used to monitor the entrance area, if the camera of the calling panel is intentionally locked.*

- Correct operation of monitors in a single network is guaranteed only if monitors of the same series are used. In the case of monitors of different series, it is necessary to carry out an experimental test for the correct operation of the selected monitors within a single network.

- Connect all devices only when the monitor power is off!



Please, keep in mind that the intercom is powered by an alternating current network, voltage 100 .. 240 volts and has a built-in voltage converter. It is only permitted to plug into the network after all electrical connections have been completed.

Requirements for communication lines:

4-wire unshielded cable.

The length of the cable between the calling panel and the video door monitor depending on the cable section:

- length up to 28 m (4x0.2 mm)
- length up to 50 m (4x0.3 mm)
- length up to 80 m (4x0.5 mm)

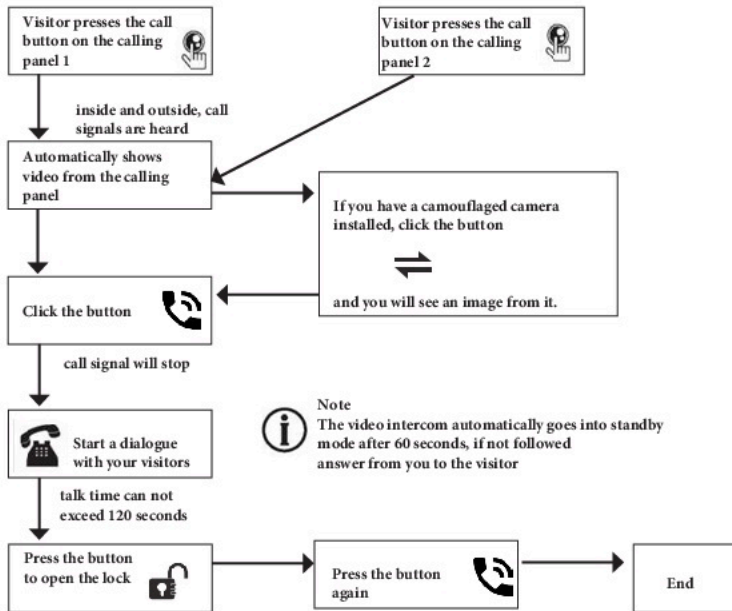
*These functions are optional and may not be available on some intercoms

■ OPERATION

■ Calling a visitor

*It is required to connect two call panels

Standby mode

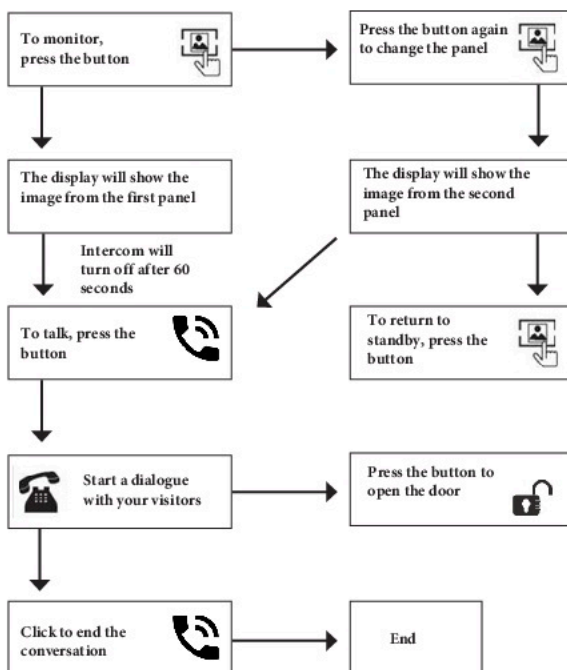


Notes:




1) If the call button is pressed almost simultaneously on two call panels, then the call will go from the panel whose button was pressed earlier. If during a conversation with one panel, press the call button on the second panel, the video intercom will emit three short beeps to alert the operator of a parallel incoming call. 2) The sound and the image from the panel will be activated for another 20 seconds after unlocking the lock. This is done so that the owner can be sure that the visitor has entered.

■ Monitoring

* Please keep in mind that the monitor is designed to work with one or two calling panels.

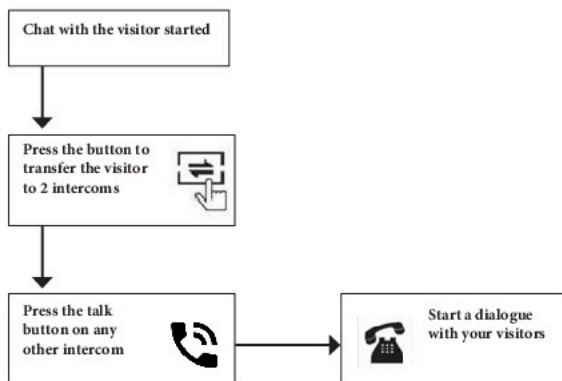


Note

-  If you use only one call panel, then in the viewing mode you can exit it by pressing the talk button.
-  In the case of using two monitors, you can also view on the second monitor. And the image will be the same as on the first monitor.
-  If, during a conversation with a visitor, the monitor expires 60 seconds. Will go into standby mode, it is necessary for the visitor to repeatedly press the call button or the owner to press the "conversation" button on the monitor to continue the conversation.

▪ Call forwarding to another monitor

* For this function, it is necessary to combine at least two monitors into a single network.



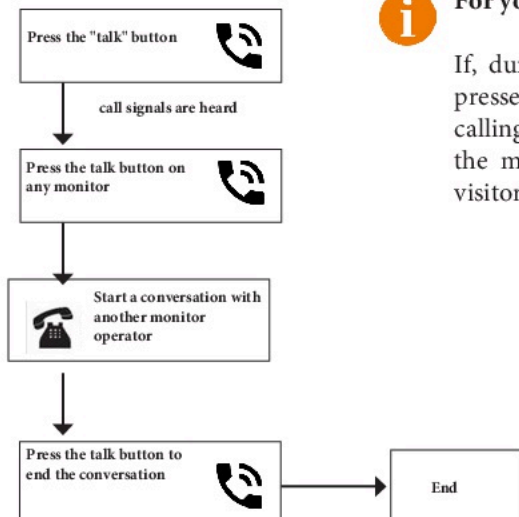
Note

After the conversation is over, open the lock and end the conversation by clicking the "Talk" button.

▪ Internal audio communication (intercom mode)

* For this function, you must combine at least two monitors into a single network.

Standby mode



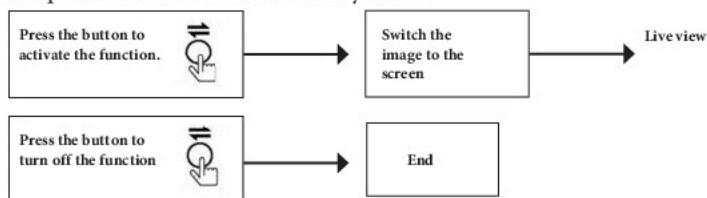
For your information

If, during internal negotiations, the visitor presses the call button on the external calling panel, the call will take precedence and the monitor will switch to the call of the visitor.

▪ Video surveillance (option)

Demand:

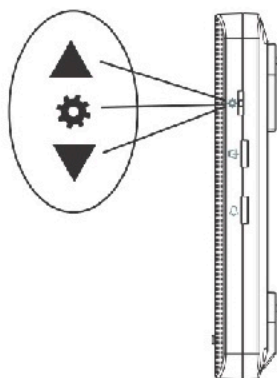
1. Connect an additional camera
2. The doorphone must be in the standby mode



Note

i If in the view mode, add. The visitor presses the call button on the panel, then this call will take precedence.

▪ On-Screen Display



The button-wheel located on the side of the monitor CTV-M1700M has the following functions:

- A: Use to navigate the on-screen menu of the monitor. In standby mode, press the button to display the on-screen menu. Turn the wheel to navigate the on-screen menu.
- B: In the monitoring mode, press the button to call up the image settings window - brightness, saturation, contrast.
- C: In monitoring or talking with the visitor, turn the wheel up to capture the screen shot to the internal memory of the monitor.

If the monitor is in the standby mode, then after pressing the button, the menu will appear on its screen, as shown in the picture below.:



To scroll through the menu sections, scroll the wheel button, and to enter the desired section, click on it. While in the selected section, select the desired parameter by clicking on the wheel button, and adjusting the values by scrolling.

The values of the parameters of the first section of the menu "Call parameters":

Ring Select: select a ringtone (16 melodies).

Ring Time: select the call duration (1-60 sec) Ring Vol 1-3 parameters: used to set the three time periods of the day and set the different ringer volume for each period. For correct operation of this function, it is necessary to set the mechanical volume control of the bell to the position corresponding to the maximum volume of the call.

Exit: Exit the OSD (by scrolling the wheel).

Menu item "Image settings":



English	
Brightness	40
Chroma	50
Contrast	45
Exit	

The values of the parameters of the second section of the "Image Settings" menu:

English: select the language for the menu interface (Russian, English, Chinese).

Brightness: Adjusts the brightness of the image (0-100).

Chroma (Saturation): Adjusts the color of the image (0-100). Contrast: Adjusts the contrast of the image (0-100).

Exit: Exits the OSD (by scrolling the wheel).

Menu section "Date and time settings":



Date	2000- 01- 01
Time	09: 32
Reboot	
Version	1-0-0 2014-06-07
Exit	

Parameters of the third section of the menu "Date and time settings": Date: sets the current date in the format YYYY-MM-DD.

Time: Sets the time in HH: MM format.

Reboot: Restarts the monitor.

Version: The current version of the monitor firmware.

Exit: Exits the OSD (by scrolling the wheel).



Note: time and date are stored for one hour after the power is turned off. After that, you will need to reset the correct date and time.

Menu section "Monitor operating modes":



Unlock Time	02S
Mode	Master
Door2	ON
Cam1	ON
Exit	

Parameter values of the fourth section of the menu "Monitor operating modes": Unlock time: select the time period during which the signal will be applied to the dry contacts of the call panel, when the lock opening button is pressed (2-10sec).

Mode: Selects the operating mode of the monitor - Master (Main) or Slave (Optional).

Door2: Enables / disables the monitoring of the video input Door2. Camera1: Enables / disables the monitoring of the Camera1 video input. Exit: Exits the OSD menu (scroll wheel).

The "Playback" menu section:



Play
Format
Exit

Parameter values of the fifth section of the "Recording parameters" menu:

Play (Playback): View photos by scrolling the wheel. To exit the playback mode, you need to press the button-wheel.

Format: formatting the internal memory of the monitor - deleting all photos
Exit: Exit the OSD.

▪ **COMPLETE SET OF THE CTV COLOR MONITOR CTV-M1700M**

1. Monitor CTV-M1700M with power cable 220V
2. Monitor Mounting Plate to Wall
3. Mounting cable for connecting the panel (s) and additional monitor (s) - 3 pcs.
4. Mounting kits (screws and dowels) of the monitor and panels
5. Operating Instructions for the Monitor

▪ CTV-M1700M MONITOR SPECIFICATIONS

Option	Value
Display	7 " TFT LCD
Resolution	800x480
Standard video	PAL/NTSC
Intercom mode	Half Duplex
Duration of the conversation	120 sec
Standby current	Max. 200mA / 220V
Current in operating mode	Max. 500 mA / 220V
Supply voltage	AC 100-240 Volts
Working temperature	-10...+60°C
Installation	Mounting plate
Dimensions	201x130x22 mm
Product weight in package (gross)	0,59 kg

▪ STORAGE RULES

The device should be stored in a ventilated room at a temperature of -10 ° C to + 50 ° C and a relative humidity of 95%.

▪ GUARANTEE

The manufacturer guarantees the operation of the product within 12 months from the moment of its realization, under the conditions of installation and operation stated in this manual.

In the absence of documents confirming the date of sale, the warranty period is calculated from the date

Manufacturing. Warranty repair is not performed if the device has failed due to failure to comply with the instructions given in this manual, the presence of mechanical damages, the consequences of penetration of any liquids inside the shell, breach of warranty seals.

The warranty does not apply to a product with a broken warranty seal.

Name	Color Monitor CTV-M1700M	
Serial number	Monitor	Panel
Date of sale		
Seller		
Address		
Phone		



www.ctvcctv.ru